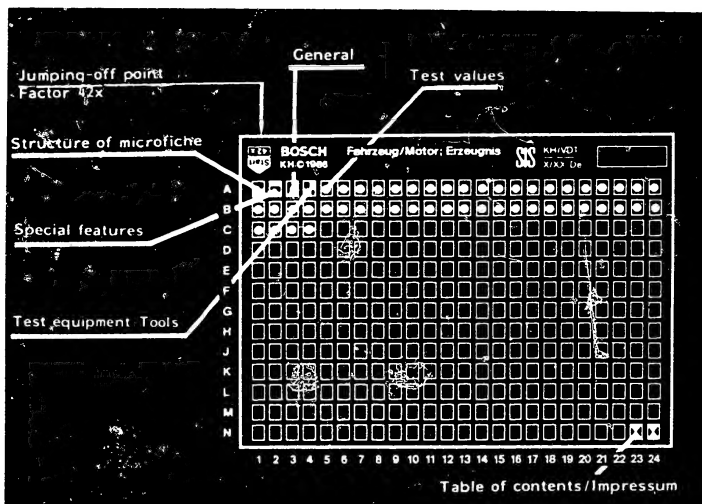
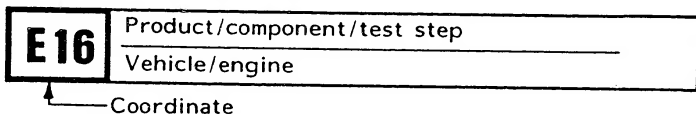


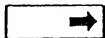
Structure of microfiche



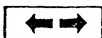
1. Read from left to right
2. Title of microfiche (appears on each coordinate)



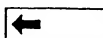
3. Limits of section



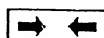
Beginning



Mid-section



End



One-page section

4. Purely vehicle-specific passages in the text are marked with a vertical bar.
5. Reference to relevant working steps in the test specifications, e.g. coordinate C6.



Test specifications



1. Special features:

Testing can only be carried out dynamically on the vehicle in question.

The testing procedure is adapted to simulation of the lamp load with mean value lamps.

The appropriate circuit diagrams of the magneto system are shown next to the test specifications.

This microcard replaces the paper test specifications

W - 212/2001, .. 2002 1rst edition

W - 212/2050 1rst edition

A2

Special features

Breakerless magneto generators



2. General

- Set the air gap between the iron cores of the ignition/generator armature and the flywheel to 0.35 mm.
- Simulate test load with mean-value lamps.

Example of the determination of a mean-value lamp:
A voltage of 6.7 V is applied to a commercially-available 6 V 35 W lamp (for example), and after approx. 1 minute the current is measured. The current value is multiplied by the voltage.
The value obtained should lie at $35 \text{ W} \pm 1\%$.
With 12 V lamps, the voltage to be applied is 13.5 V.



3. Test equipment and tools

Multimeter, e.g. Electric tester	ETE 014.00	0 681 ...
Feeler guage	commercially available	0.1 ... 1.0 mm
Mechanical or electronic tachometer	commercially available	

Flywheel puller, see table

Flywheel puller EFEP..	For magneto generators 0 212 ..
323	199 004, .. 005
Flywheel puller KOLM ..	
6797	197 001 198 002, .. 003, .. 004, .. 005, .. 006, .. 007. 198 102 199 006, .. 008, .. 011, .. 013, .. 014, .. 021, .. 022, .. 023, .. 024, .. 025, .. 026
6798	081 001, .. 003 083 001

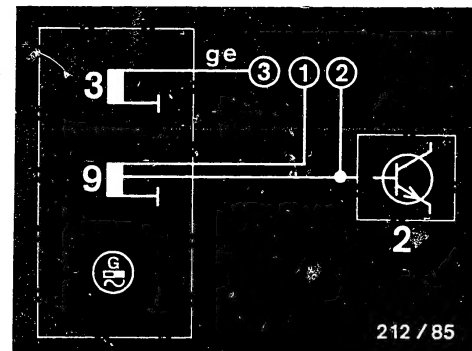


4. Test specifications

Part number		Ignition part	Generator part			
Type code	Circuit diagram, see	Ignition armature Ω	Gen. armature Ω	Voltage V	Test load W	Engine speed min^{-1}
0 212 ..						
081 001 ETVG 108 12 V 50 W	u.	0.7...0.85	2.4...3.0	9.0...10.0	1)	6000
081 003 ETVG 106	u.	0.7...0.85	2.4...3.0	9.0...10.0	1)	6000
083 001 ETIG 100 12 V 45 W	l.	0.7...0.85	2.4...3.0	9.0...10.0	1)	6000
183 001 ETI 114 G 12 V 60 W	l.	0.7...0.85	2.4...3.0	10.5...11.5	2)	6000

- 1) Load resistance 3 Ω .
2) Generator armature measured at 2.9 Ω

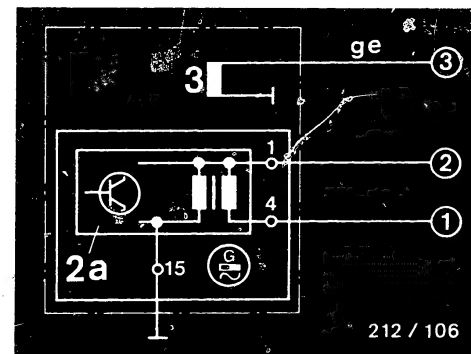
u = upper
l = lower



2 = Trigger box
2a = Integrated trigger box
3 = Generator armature
9 = Ignition armature

(1) = To spark plug
(2) = To short-circuiting device
(3) = To rectifier. To loads when operating without rectifier.

ge = yellow



A5

Test specifications
Breakerless magneto generators



A6

Test specifications
Breakerless magneto generators



Part number	Circuit diagram, see	Ignition part 6)		Generator part 6)				Voltage	Test load	Engine speed
		sc	ca	m1 1)	t1 2)	s1 3)	ts 4)			
0 212 ..		Ω	Ω	Ω	Ω	Ω	Ω	V	W	min-1
195 001 RDPK1 6V20/10/11/	5)	260	730	1.3	-	1.6	0.9	7.7...8.7 7.6...8.6 6.5...7.5	20 10 11	6000
195 007 RDPK1 6V16/4/10/11W	5)	260	730	1.3	0.3	1.6	0.9	6.5...7.5 6.2...7.2 6.7...7.7 6.7...7.7	16 4 10 11	6000 6000 6000 2000

sc = Storage-capacitor-charging armature

ca = Control armature

m1 = Main-light armature

s1 = Stop-lamp armature

ts = Turn-signal armature

t1 = Tail-lamp armature

1) Main light (tail lamp loaded, s1 + ts non-loaded)

2) Tail lamp (m1 - loaded, s1 + ts non-loaded)

3) Stop lamp (remaining generator armatures non-loaded)

4) Turn signal (remaining generator armatures non-loaded)

5) See Coordinate A 9

6) $\Omega \pm 10\%$

A7

Test specifications

Breakerless magneto generators

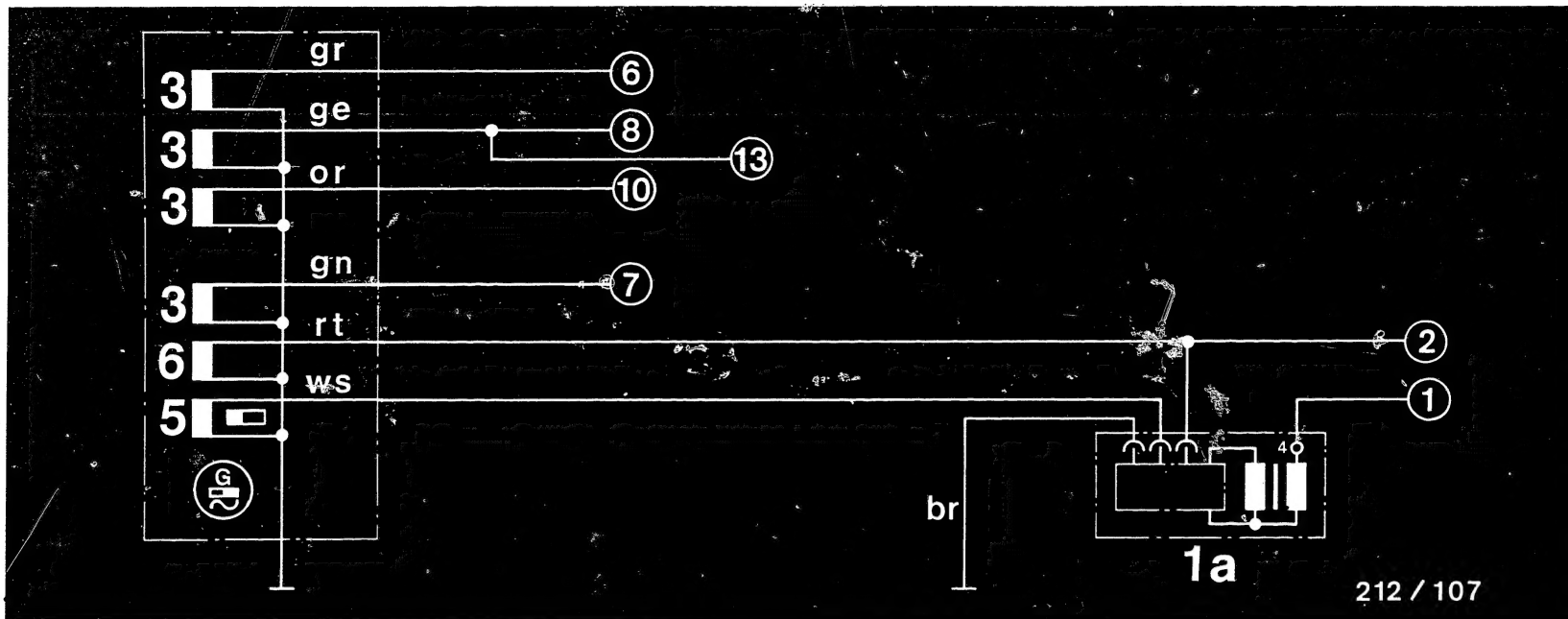


A8

Test specifications

Breakerless magneto generators





212 / 107

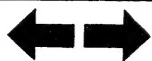
Circuit diagram for breakerless magneto generators 0 212 195 001/.. 007

- 1a = Ignition coil with integrated electronics
- 3 = Generator armature
- 5 = Control armature
- 6 = Storage-capacitor-charging armature
- (1) = Spark plug
- (2) = To short-circuiting device
- (6) = To tail lamp
- (7) = To stop lamp
- (8) = To headlamp
- (10) = To turn signal
- (13) = To indicator lamp

- ge = yellow
- gn = green
- gr = gray
- or = orange
- rt = red
- ws = white
- br = brown

A9

Test specifications
Breakerless magneto generators

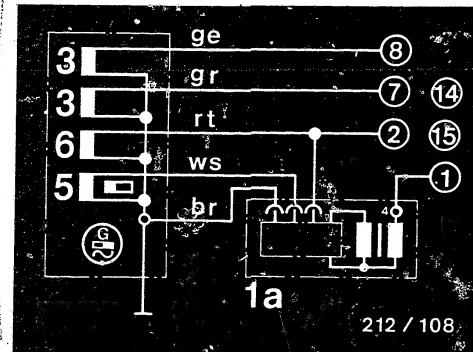


A10

Test specifications
Breakerless magneto generators



Part number	Circuit diagram	Ignition part		Generator part				
		Storage-cap. charging armature	Control armature	Gen. armature	Gen. arm. sl,tl	Voltage	Test load	Engine speed
0 212 ..	see	Ω	Ω	Ω	Ω	V	W	V-1
195 005 RDP1 6V35-7V3A23	u.	230...290	670...790	1.0...1.6	-	6.8...7.8	35	6000



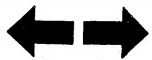
- 1a = Ignition coil with integrated electronics
 3 = Generator armature
 5 = Control armature
 6 = Storage-capacitor-charging armature
 (1) = To spark plug
 (2) = To short-circuiting device
 (7) = To stop lamp
 (8) = To main light
 (14) = To regulator
 (15) = To tachometer
 br = brown rt = red
 ge = yellow ws = white
 gr = green

M1 = Main light, S1 = Stop lamp, T1 = Tail lamp, Rg = Regulator
 u = upper

A11

Test specifications

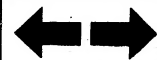
Breakerless magneto generators



A12

Test specifications

Breakerless magneto generators



Part number	Circuit diagram, see	Ignition part			Generator part		
		Storage-cap.-charging arm.	Gen. armature	Control armature	Voltage	Test load	Engine speed
0 212 ..		Ω	Ω	Ω	V	W	min ⁻¹
196 001 RCPK 331 - 12V70W	1)	450...550	1.9...2.3	210...230	-	-	6000

1) see Coordinate A15/A16

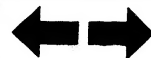
A13

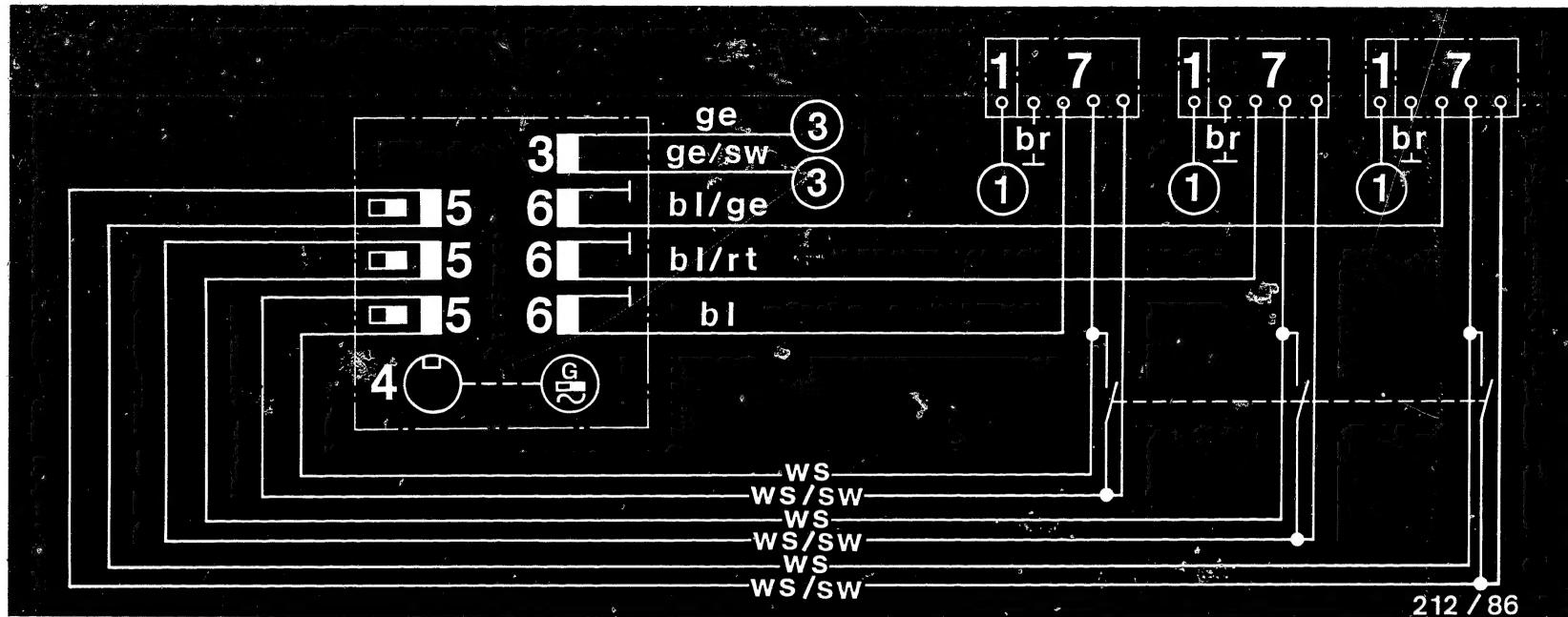
Test specifications
Breakerless magneto generators



A14

Test specifications
Breakerless magneto generators





212 / 86

Circuit diagram for breakerless magneto generator 0 212 196 001

- 1 = Ignition coil
- 3 = Generator armature
- 4 = Trigger projection
- 6 = Storage-capacitor-storage armature
- 7 = Electronic box
- 9 = Ignition armature

- (1) = To spark plug
- (2) = To short-circuiting device
- (3) = To rectifier. To loads when operating without rectifier

- bl = blue
- br = brown
- ge = yellow
- rt = red
- sw = black
- ws = white

A15

Test specifications

Breakerless magneto generators



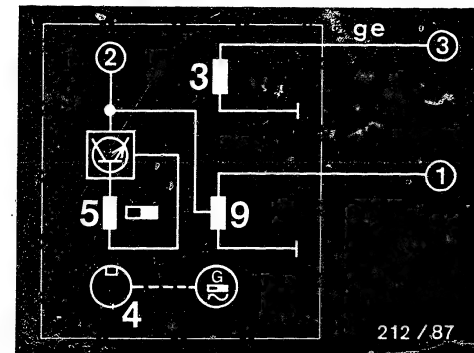
A16

Test specifications

Breakerless magneto generators



Part number		Ignition part		Generator part			
Type code	Circuit diagram, see	Ignition armature	Gen. armature	Control armature	Voltage	Test load	Engine speed
0 212 ..		Ω	Ω	Ω	V	W	min-1
197 001 RDT1-6V18W	u.	1.8...2.2	0.4...0.45	approx. 80	-	18	6000



- 3 = Generator armature
- 4 = Trigger projection
- 5 = Control armature
- 9 = Ignition armature

- (1) = To spark plug
- (2) = To short-circuiting device
- (3) = To rectifier. To loads when operating without rectifier
- ge = yellow rt = red
- sw = black ws = white

u = upper

A17

Test specifications

Breakerless magneto generators



A18

Test specifications

Breakerless magneto generators



Part number	Circuit diagram, see	Ignition part			Generator part		
		Storage-cap.-charging arm. Ω	Ignition armature Ω	Control armature Ω	Voltage V	Test load W	Engine speed min-1
0 212 ..							
197 102 RCPK 221 - 12V130W	1)	450...550	-	59...67	13...15	130	6000
197 103 RCPK221 - 12V130W	1)	450...550	-	210...230	13...15	130	6000

1) see Coordinate A21/A22

A19

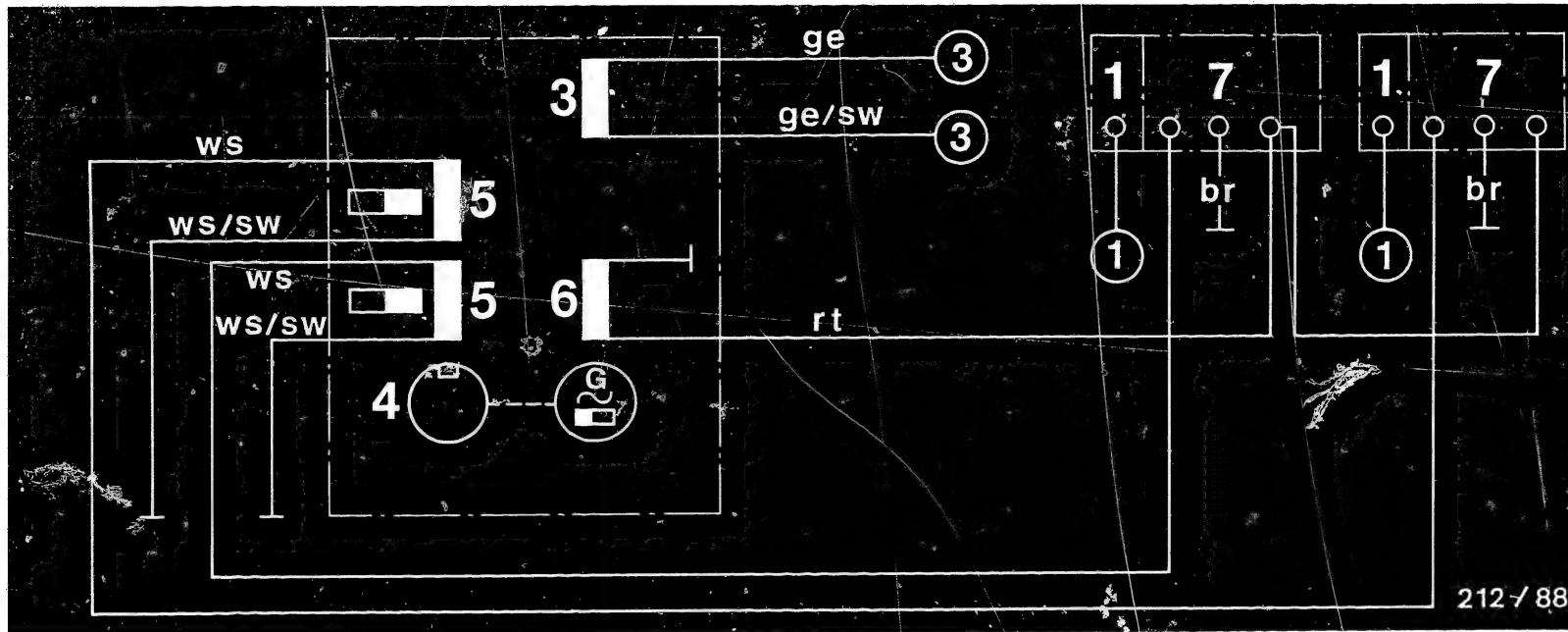
Test specifications
Breakerless magneto generators



A20

Test specifications
Breakerless magneto generators





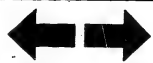
Circuit diagram for breakerless magneto generators 0 212 197 102/ .. 103

- | | | |
|---|---|-------------|
| 1 = Ignition coil | (1) = To spark plug | br = brown |
| 3 = Generator armature | (2) = To short-circuiting device | ge = yellow |
| 4 = Trigger protection | (3) = To rectifier. To loads when operating without rectifier | sw = black |
| 5 = Control armature | | ws = white |
| 6 = Storage-capacitor-charging armature | | |
| 7 = Electronic box | | |
| 9 = Ignition armature | | |

A21

Test specifications

Breakerless magneto generators



A22

Test specifications

Breakerless magneto generators



Part number	Circuit diagram	Ignition part	Generator part				
		Storage-cap.-charging armature	Gen. armature	Control armature	Voltage	Test load	Engine speed
0 212 ..	see	Ω	Ω	Ω	V	min ⁻¹	
198 002 RDPK1 - 6V35/30W	u.	450...550	0.7...1.0	59...67	6.4...7.4 5.7...6.7	35 30	6000
198 003 RDPK1 - 6V35/30W	u.	450...550	0.7...1.0	59...67	6.4...7.4 5.7...6.7	35 30	6000
198 004 RDPK1 - 6V35/30W	u.	450...550	0.7...1.0	59...67	6.4...7.4 5.7...6.7	35 30	6000
198 005 RDPK1 - 12V60W	l.	450...550	1.9...2.3	59...67	13...15	60	6000
198 006 RDPK1 - 6V35/30W	u.	450...550	0.7...1.0	59...67	6.4...7.4 5.7...6.7	35 30	6000
198 007 RDPK1 - 6V35/30W	u.	450...550	0.7...1.0	59...67	6.4...7.4 5.7...6.7	35 30	6000

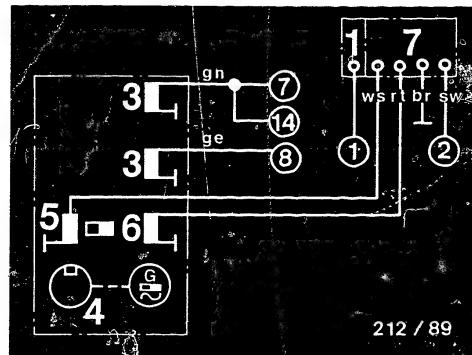
Legend:

- 1 = Ignition coil
- 3 = Generator armature
- 4 = Trigger protection
- 5 = Control armature
- 6 = Storage-cap.-charging armature
- 7 = Electronic box

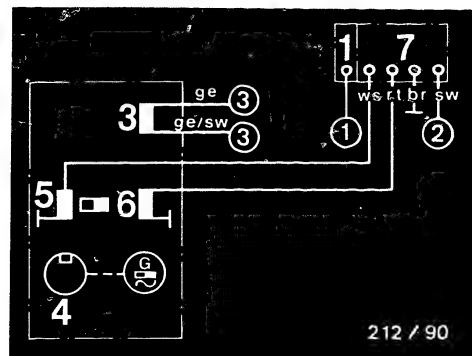
- (1) = To spark plug
- (2) = To short-circuiting device
- (7) = To stop lamp
- (8) = To headlamp
- (14) = To regulator

- br = brown
- ge = yellow
- gn = green
- rt = red
- ws = white
- sw = black

u = upper
l = lower



212 / 89



212 / 90

A23

Test specifications
Breakerless magneto generators

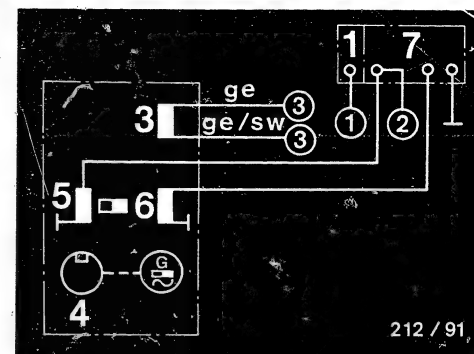


A24

Test specifications
Breakerless magneto generators



Part number	Circuit diagram,	Ignition part	Generator part					Engine speed
			Storage-cap.-charging armature	Gen. armature	Control armature	Voltage	Test load	
0 212 ..	see	Ω	Ω	Ω	V	W	min-1	
198 101 RCPK1 - 12V130W	u.	450...550	0.7...1.0	59...67	13...15	130	6000	
198 102 RCPK1 - 12V130W	u.	450...550	0.7...1.0	59...67	13...15	130	6000	
198 103 RDPK1 - 6V35/30W	1. 1)	450...550	1.9...2.3	59...67	13...15	75 50	6000	



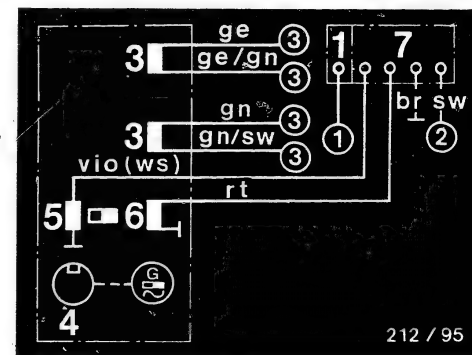
Legends:

- 1 = Ignition coil
- 3 = Generator armature
- 4 = Trigger protection
- 5 = Control armature
- 6 = Storage-cap.-charging armature
- 7 = Electronic box

- (1) = To spark plug
- (2) = To short-circuiting device
- (3) = To rectifier, to loads when operating without rectifier

- br = brown
- ge = yellow
- gn = green
- rt = red
- sw = black
- vi = violet
- ws = white

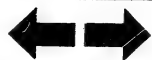
- 1) Magneto may be operated only with connected regulator or with short-circuited generator.
- u. = upper, l. = lower



B1

Test specifications

Breakerless magneto generators



B2

Test specifications

Breakerless magneto generators

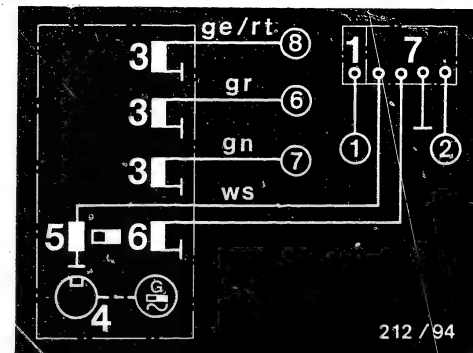


Part number	Circuit diagram, see	Ignition part		Generator part 1)						
		sc Ω	ca Ω	m1 Ω	t1 Ω	s1 Ω	Voltage V	Test load W	Engine speed min-1	
199 005 RCPK1 - 6V35-5/18W	u.	950... 1300	60... 80	0.3	9.3	1.2	6.5...7.5 6.7...7.7 5.8...6.8	35 5 18	6000	
199 006 RCPK1 - 6V35-5/18W	u.	950... 1300	60... 80	0.3	9.3	1.2	6.5...7.5 6.7...7.7 5.8...6.8	35 5 18	6000	
199 008 RCPK1 - 1 6V35-5/18W	u.	950... 1300	60... 80	0.3	9.3	1.2	6.5...7.5 6.7...7.7 5.8...6.8	35 5 18	6000	
199 011 RCPK1 6V35-5/18W	u.	950... 1300	60... 80	0.3	9.3	1.2	6.5...7.5 6.7...7.7 5.8...6.8	35 5 18	6000	
199 013 RCPK1 - 6V35-5/18W	u.	450... 550	60... 80	0.3	9.3	1.2	6.5...7.5 6.7...7.7 5.8...6.8	35 5 18	6000	

sc = Storage-capacitor-charging armature
ca = Control armature
m1 = Main-light armature
t1 = Tail-lamp armature
s1 = Stop-lamp armature

1) =Ω ± 10%

u. = upper



- 1 = Ignition coil
- 2 = Generator armature
- 4 = Trigger protection
- 5 = Control armature
- 6 = Storage-cap.-charging armature
- 7 = Electronic box

- (1) = To spark plug
- (2) = To short-circuiting device
- (3) = To rectifier
- (6) = To tail lamp
- (7) = To stop lamp
- (8) = To headlamp
- br = brown gn = green
- ge = yellow rt = red
- gr = green

B3

Test specifications
Breakerless magneto generators



B4

Test specifications
Breakerless magneto generators



Part number	Circuit diagram, see	Ignition part		Generator part 1)						
		sc	ca	m1	t1	s1	Voltage	Test load	Engine speed	
Type code		Ω	Ω	Ω	Ω	Ω	V	W	min-1	
0 212 ..										
199 007 RCPK1 - 12V55W	u.	450... 550	60... 80	0.9	-	-	2)	-	6000	

sc = Storage-capacitor-charging armature

ca = Control armature

m1 = Main-light armature

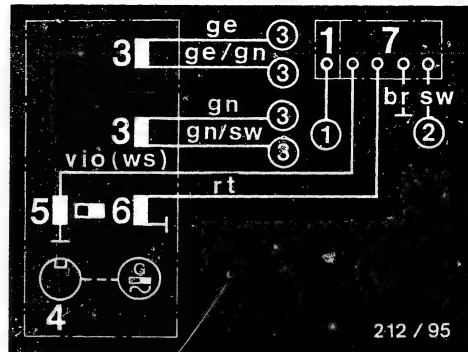
t1 = Tail-lamp armature

s1 = Stop-lamp armature

1) $=\Omega \pm 10\%$

2) Load via bridge rectifier and battery, battery charging current between 3 and 4 A direct current

u. = upper



- 1 = Ignition coil
- 3 = Generator armature
- 4 = Trigger projection
- 5 = Control armature
- 6 = Storage-cap.-charging armature
- 7 = Electronic box

- (1) = To spark plug
- (2) = To short-circuiting device
- (3) = To rectifier
- br = brown sw = black
- ge = yellow vto = violet
- gn = green ws = white
- rt = red

B5

Test specifications
Breakerless magneto generators

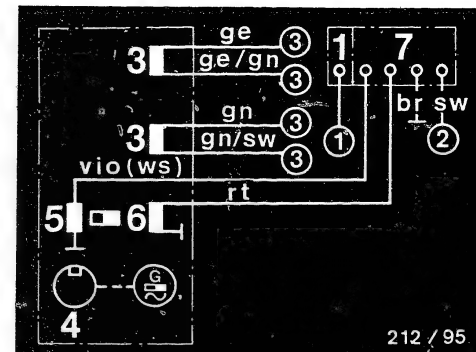


B6

Test specifications
Breakerless magneto generators



Part number	Circuit diagram, see	Ignition part		Generator part 1)				
		sc Ω	ca Ω	ga 40W Ω	ga 15W Ω	Voltage V	Test load W	Engine speed min-1
0 212 ..								
199 014 RCPK1 - 12V55W	u.	450... 550	60... 80	0.9	7.6	2)	-	6000
199 018 RCPK1 - 12V55W	u.	450... 550	60... 80	0.9	7.6	2)	-	6000
199 019 RCPK1 - 12V55W	u.	450... 550	60... 80	0.9	7.6	2)	-	6000



- 1 = Ignition coil
3 = Generator armature
4 = Trigger projection
5 = Control armature
6 = Storage-cap.-charging armature
7 = Electronic box

- (1) = To spark plug
(2) = To short-circuiting device
(3) = To rectifier
br = brown vio = violet
ge = yellow sw = black
gn = green ws = white

sc = Storage-capacitor-charging armature
ca = Control armature
ga = Generator armature

1) = $\Omega \pm 10\%$

2) Loading via bridge rectifier and battery, battery charging current between 3 and 4 A direct current

m1 - Characteristic curve/t1-loaded
t1 - Characteristic curve/m1-loaded

u. = upper

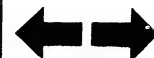
B7

Test specifications
Breakerless magneto generators

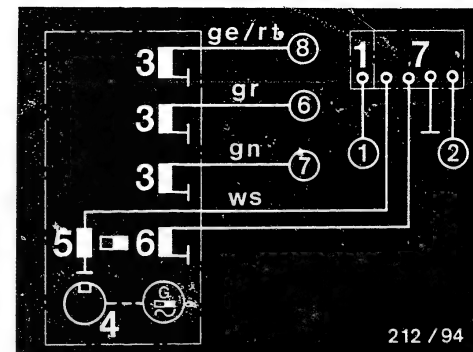


B8

Test specifications
Breakerless magneto generators



Part number	Circuit diagram, see	Ignition part		Generator part 1)					Test load	Engine speed min-1
		sc	ca	m1	t1	s1	Voltage	W		
0 212 ..		Ω	Ω	Ω	Ω	Ω	V	W		
199 021 RCPK1 - 6V35-5/18W	u. 2)	450... 550	60... 80	0.3	9.3	1.15	6.5...7.5 6.7...7.7 5.8...6.8	35 5 18	6000	
199 022 RCPK1 - 6V35-5/18W	u.	450... 550	60... 80	0.3	9.3	1.15	6.5...7.5 6.7...7.7 5.8...6.8	35 5 18	6000	
199 023 RCPK1 - 6V35-5/18W	u.	450... 550	60... 80	0.3	9.3	1.15	6.5...7.5 6.7...7.7 5.8...6.8	35 5 18	6000	
199 024 RCPK1 - 6V35-5/18W	u.	450... 550	60... 80	0.3	9.3	1.15	6.5...7.5 6.7...7.7 5.8...6.8	35 5 18	6000	
199 025 RCPK1 - 6V35-5/18W	u.	450... 550	60... 80	0.3	9.3	1.15	6.5...7.5 6.7...7.7 5.8...6.8	35 5 18	6000	
199 026 RCPK1 - 6V25-5/19W	u. 2)	450... 550	60... 80	-	-	-	6.5...7.5 6.7...7.7 5.8...6.8	25 5 19	6000	



- 1 = Ignition coil
3 = Generator armature
4 = Trigger projection
5 = Control armature
6 = Storage-cap.-charging armature
7 = Electronic box

- (1) = To spark plug
(2) = To disconnecter
(3) = To rectifier
(6) = To tail lamp
(7) = To stop lamp
(8) = To headlamp
br = brown gn = green
ge = yellow rt = red
gr = gray ws = white

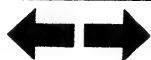
sc = Storage-capacitor-charging armature
ca = Control armature
m1 = Main-light armature
t1 = Tail-lamp armature
s1 = Stop-lamp armature

- 1) $\Omega \pm 10\%$
2) m1 - characteristic curve/t1-loaded
t1 - characteristic curve/m1-loaded

u. = upper

B9

Test specifications
Breakerless magneto generators



B10

Test specifications
Breakerless magneto generators



Part number	Circuit diagram, see	Ignition part			Generator part		
		Storage-cap.-charging arm.	Gen. armature	Control armature	Voltage	Test load	Engine speed
0 212 ..		Ω	Ω	Ω	V	W	min-1
485 001 SCP-BT - 12V150W	1)	-	-	60...80	2)	-	4000

1) See Coordinate B13/B14

2) Rectifier bridge or DC regulator 0 212 920 001 with disconnected closed loop (terminal 2 not assigned) direct current or battery charge 10...11A not regulated.

B11

Test specifications

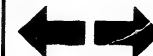
Breakerless magneto generators

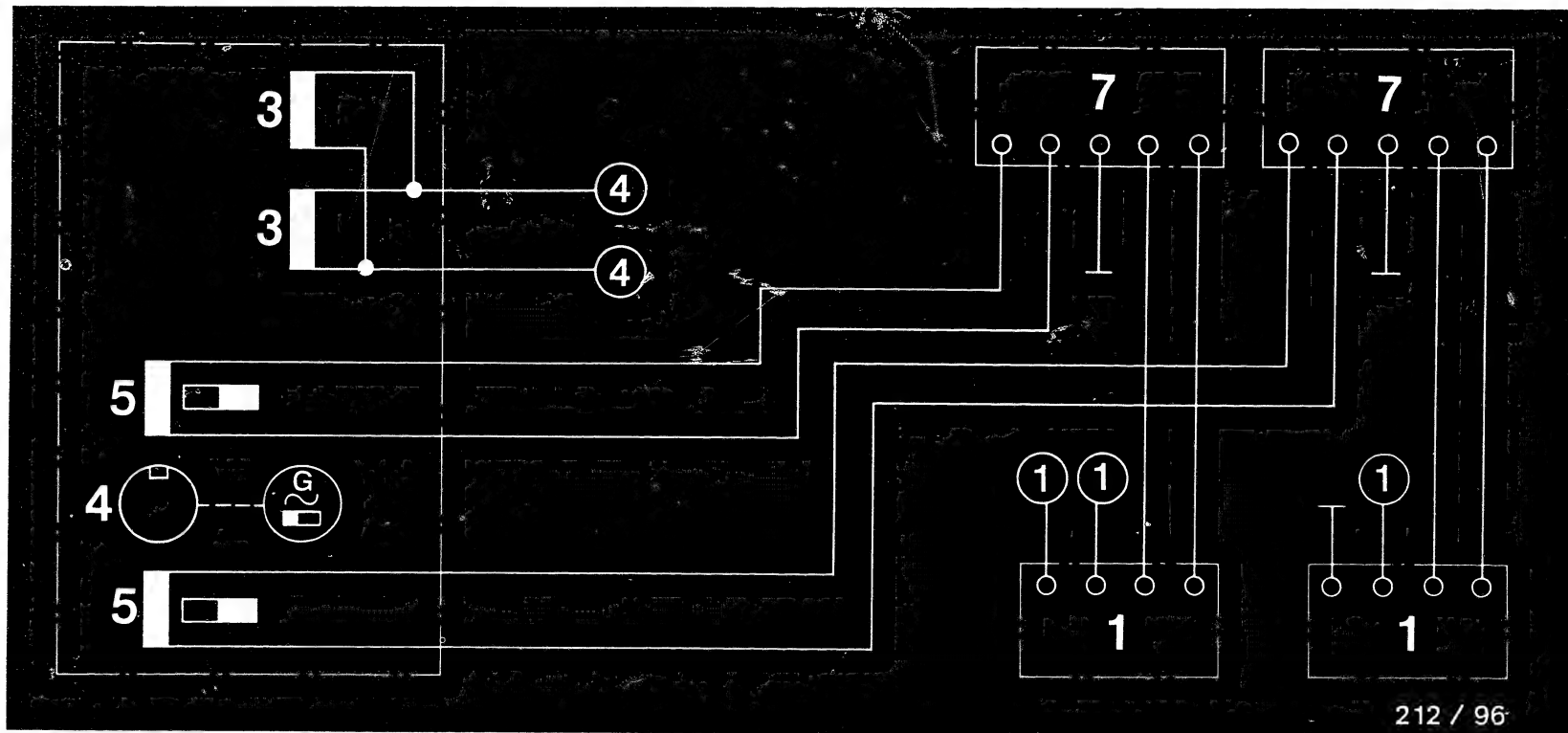


B12

Test specifications

Breakerless magneto generators





212 / 96

Circuit diagram for breakerless magneto generator 0 212 485 001

- | | |
|---|---------------------|
| 1 = Ignition coil | (1) = To spark plug |
| 2 = Trigger box | (4) = To rectifier. |
| 3 = Generator armature | Isolate leads when |
| 4 = Trigger protection | operating without |
| 5 = Control armature | rectifier. |
| 6 = Storage-capacitor-charging armature | |
| 7 = Electronic box | |

B13

Test specifications
Breakerless magneto generators

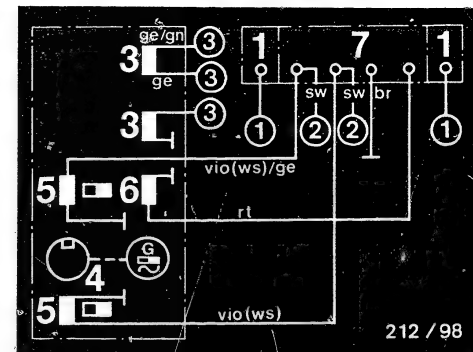


B14

Test specifications
Breakerless magneto generators



Part number	Circuit diagram, see	Ignition part			Generator part		
		Storage-cap.-charging arm.	Gen. armature	Control armature	Voltage	Test load	Engine speed
0 212 ..		Ω	Ω	Ω	V	W	min-1
498 005 SCP221 - 12V75/23W	u.	300...400	-	50...80	13.0...14.0	75	4000
498 007 SCP221 - 12V100W	l.	300...400	-	50...80	13.0...14.0	100	4000



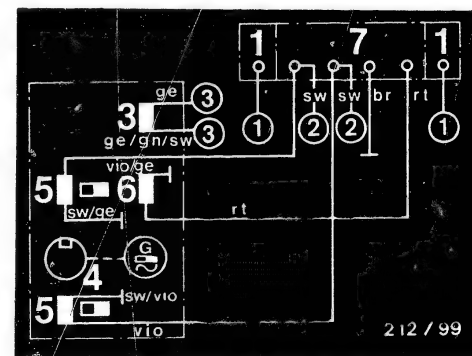
Legends:

- 1 = Ignition coil
- 2 = Generator armature
- 4 = Trigger protection
- 5 = Control armature
- 6 = Storage-cap.-charging arm.
- 7 = Electronic box

- (1) = To spark plug
- (2) = To short-circuiting device
- (3) = To rectifier. To loads when operating without rectifier

- br = brown
- ge = yellow
- gn = green
- rt = red
- sw = black
- vio = violet
- ws = white

- u. = upper
- l. = lower



B15

Test specifications

Breakerless magneto generators



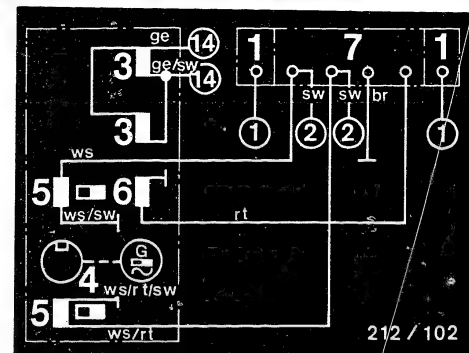
B16

Test specifications

Breakerless magneto generators



Part number	Circuit diagram, see	Ignition part			Generator part		
		Storage-cap.-charging arm. Ω	Gen. armature Ω	Control armature Ω	Voltage V	Test load W	Engine speed min-1
0 212 ..							
498 011 SCP221 - 12V140W	u.	300...400	-	50...80	-	-	4000
498 012 SCP221 - 12V75W	l.	300...400	0.43...0.53	60...80	13.5...14.5	75	4000



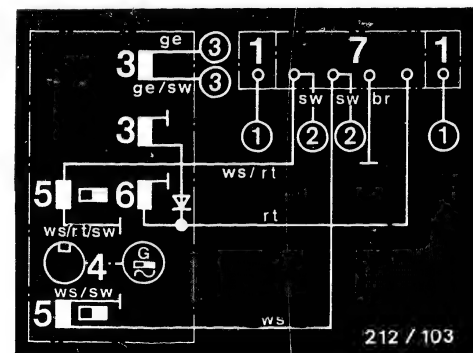
Legends:

- 1 = Ignition coil
- 2 = Generator armature
- 4 = Trigger protection
- 5 = Control armature
- 6 = Storage-cap.-charging arm.
- 7 = Electronic box

- (3) = To rectifier. To loads when operating without rectifier
- (1) = To spark plug
- (2) = To short-circuiting device
- (14) = To regulator

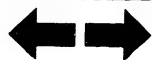
- br = brown
- ge = yellow
- rt = red
- sw = black
- ws = white

u. = upper, l. = lower



B17

Test specifications
Breakerless magneto generators

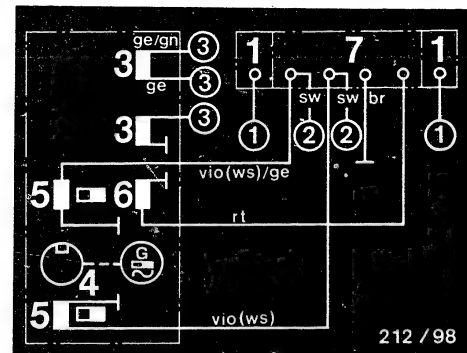


B18

Test specifications
Breakerless magneto generators



Part number	Circuit diagram, see	Ignition part			Generator part		
		Storage-cap.-charging arm.	Gen. armature	Control armature	Voltage	Test load	Engine speed
0 212 ..		Ω	Ω	Ω	V	W	min-1
498 013 1) SCP221 - 12V140W	u.	300...400	0.2...0.26 2.0...2.50 2)	60...80	11.5...12.5	100	4000
498 014 1) SCP221 - 12V140W	1.	300...360	0.2...0.26 2.0...2.50 2)	50...80	11.5...12.5	100	4000



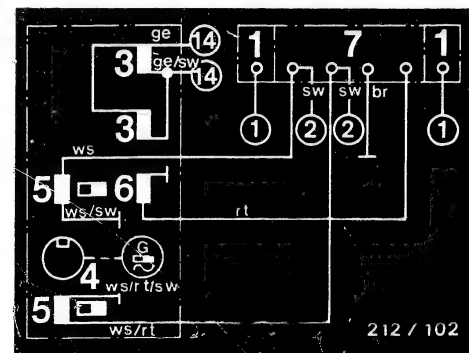
Legends:

- 1 = Ignition coil
- 2 = Generator armature
- 4 = Trigger projection
- 5 = Control armature
- 6 = Storage-cap.-charging arm.
- 7 = Electronic box

- (1) = To spark plug
- (2) = To short-circuiting device
- (3) = To regulator

- br = brown
- ge = yellow
- gn = green
- rt = red
- sw = black
- vio = violet
- ws = white

- 1) System suitable only for operation with regulator
- 2) Auxiliary generator armature
- u. = upper, 1. = lower



B19

Test specifications
Breakerless magneto generators.



B20

Test specifications
Breakerless magneto generators



Part number	Circuit diagram, see	Ignition part			Generator part		
		Storage-cap.-charging arm. Ω	Gen. armature Ω	Control armature Ω	Voltage V	Test load W	Engine speed min-1
0 212 ..							
498 015 SCP221 - 12V75W	1)	500...600	0.43...0.53	60...80	13...14	75	4000
498 016 SCP221 - 12V75W	1)	500...600	0.43...0.53	60...80	13...14	75	4000

1) See Coordinate B23/B24

B21

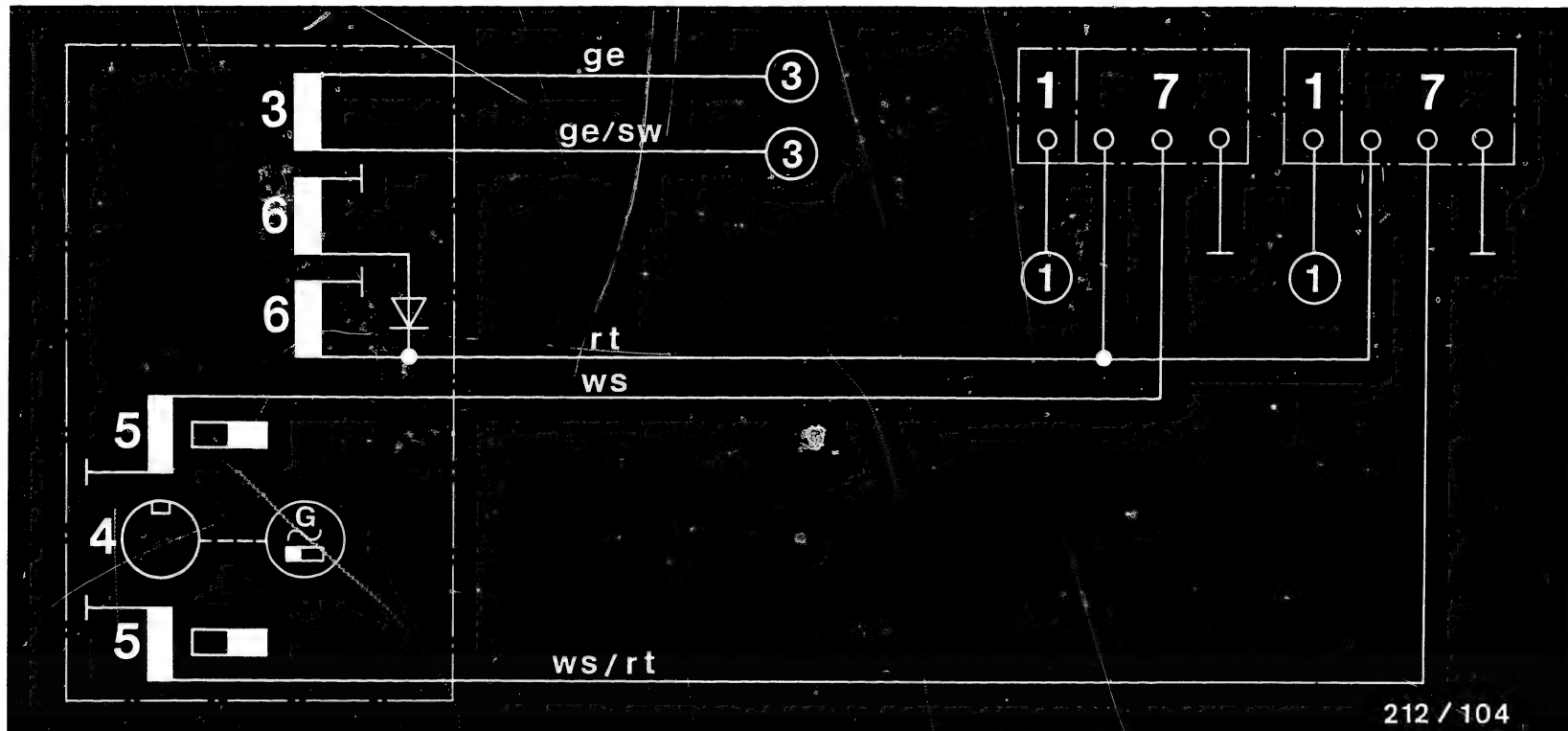
Test specifications
Breakerless magneto generators



B22

Test specifications
Breakerless magneto generators





212 / 104

Circuit diagram for breakerless magneto generators 0 212 498 015, .. 016

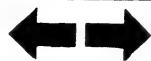
- 1 = Ignition coil
- 2 = Trigger box
- 3 = Generator armature
- 4 = Trigger projection
- 5 = Control armature
- 6 = Storage-cap.-charging armature
- 7 = Electronic box

- (1) = To spark plugs
- (2) = To short-circuiting device
- (3) = To rectifier

- ge = yellow
- rt = red
- sw = black
- ws = white

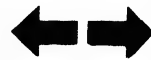
B23

Test specifications
Breakerless magneto generators

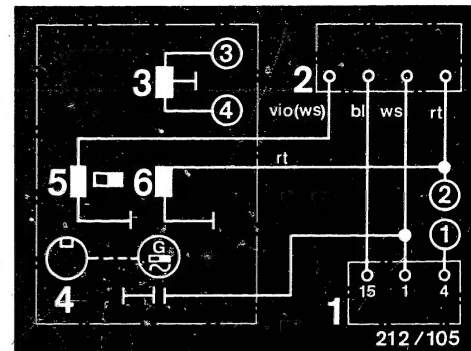


B24

Test specifications
Breakerless magneto generators



Part number	Circuit diagram, see	Ignition part			Generator part		
		Storage-cap.-charging arm. Ω	Gen. armature Ω	Control armature Ω	Voltage V	Test load W	Engine speed min-1
0 212 ..							
499 002 SCP221 - 12V75W	u. ~	300...400	0.43...0.53	50...80	13.5...14.5	75	4000
499 003 SCP221 - 12V75W	u.	300...400	0.43...0.53	50...80	13.5...14.5	75	4000



- 1 = Ignition coil
- 2 = Trigger box
- 3 = Generator armature
- 4 = Trigger projection
- 5 = Control armature
- 6 = Storage-cap.-charging armature
- 7 = Electronic box

- (1) = To spark plug
- (2) = To short-circuiting device
- (3) = To rectifier. To loads when operating without rectifier.
- (4) = To rectifier. Isolate leads when operating without rectifier.

bl = blue sw = black
 ge = yellow vio = violet
 rt = red ws = white

u. = upper

G1

Test specifications

Breakerless magneto generators



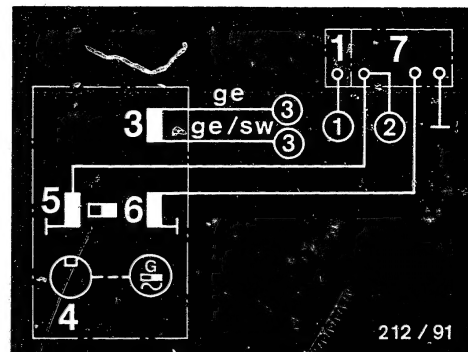
G2

Test specifications

Breakerless magneto generators



Part number	Circuit diagram, see	Ignition part			Generator part		
		Storage-cap.-charging arm.	Gen. armature	Control armature	Voltage	Test load	Engine speed
0 212 ..		Ω	Ω	Ω	V	W	min-1
499 004 SCPk1 - 12V100W	u.	300...400	0.2...0.25	210...230	12...13.0	100	4000



- 1 = Ignition coil
- 2 = Generator armature
- 4 = Trigger projection
- 5 = Control armature
- 6 = Storage-cap.-charging armature
- 7 = Electronic box

- (1) = To spark plug
- (2) = To short-circuiting device
- (3) = To rectifier. To loads when operating without rectifier.

ge = yellow
sw = black

u. = upper

C3

Test specifications
Breakerless magneto generators



C4

Test specifications
Breakerless magneto generators



Table of contents

<u>Section</u>	<u>Coordinate</u>
Structure of the microcard	A 1
1. Special features	A 2
2. General	A 3
3. Test equipment and tools	A 4
4. Test specifications with circuit diagrams	A 5
0 212 081 ..	A 5
0 212 083 ..	A 5
0 212 183 ..	A 5
0 212 195 ..	A 7
0 212 196 ..	A 13
0 212 197 ..	A 17
0 212 198 ..	A 23
0 212 199 ..	B 3
0 212 485 ..	B 11
0 212 498 ..	B 15



Table of contents (continued)

Test specifications with circuit diagrams (continued)

Coordinate

0 212 499 ..

C 1

© 1986 Robert Bosch GmbH Automotive Equipment -
After-Sales Service, Department for Technical
Publications KH/VDT, Postfach 50, D-7000 Stuttgart 1.

Published by: After-Sales Service Department for
Training and Technology (KH/VSK). Press date: 1.1986

Please direct questions and comments concerning the
contents to our authorized representative in your
country.

This publication is intended solely for the use of the
Bosch After-Sales Service Organization, and may not be
passed on to third parties without our consent.

Microfilmed in the Federal Republic of Germany.
Microphotographié en République Fédérale d'Allemagne.

N24

Table of contents/publication information
Breakerless magneto generators

